

THE MOTHS OF INDIA.
 SUPPLEMENTARY PAPER TO THE VOLUMES IN
 "THE FAUNA OF BRITISH INDIA."
 SERIES III, PART X.

By

SIR GEORGE HAMPSON, BART., F.Z.S., F.E.S.

(Continued from page 53 of this Volume.)

PYRALIDÆ.

GALLERIANÆ.

4144. *d.* MELISSOBLAPTES VINOTINCTA, n. sp. (Plate E., f. 38.).

♀. Head and thorax pale greyish, slightly tinged with brown; abdomen pale greyish. Forewing pale ochreous grey, suffused and irrorated with vinous red; subcostal nervure streaked with fuscous grey; a small greyish spot in middle of cell and ill-defined fuscous discoidal spot; a diffused curved subterminal band from vein 7 to inner margin; a terminal series of dark striæ. Hindwing pale fuscous grey.

♂. Forewing long and narrow, less suffused with vinous red and irrorated with a few black scales; a diffused black streak in base of cell, an irregular patch in middle of cell and a diffused streak in upper part of cell towards extremity. Hindwing paler and more ochreous.

Habitat.—CEYLON, Maskeliya (Pole). *Exp.* ♂ 42, ♀ 36 mill. Type in B. M.

4149. *a.* LAMORIA FUSCANEURELLA, Rag. Nouv. Gen., p. 51 (1888). id. Rom. Mem. viii., p. 437, pl. 45, f. 13.

Forewing of male with glandular swelling at base of costa.

Differs from *L. planalis* in the large discoidal annulus on forewing; hindwing more acute at apex and tinged with fuscous instead of being yellowish.

Habitat.—CEYLON, Nawalapitiya (Green), Maskeliya (Pole); SINGAPORE; SUMATRA. *Exp.* ♂ 34, ♀ 42-48 mill.

4150. LAMORIA ADAPTELLA.

This is distinct from the Palearctic; *L. anella*; the male has the base of costa of forewing dilated and hollowed out, but no glandular swelling.

Forewing with the veins streaked with fuscous; a black mark in cell between the almost obsolete stigmata.

Habitat.—CEYLON, *Exp.* 24-26, mill.

CRAMBINÆ.

4158. Rename CRAMBUS PHÆOPHLEPS, n. sp. C. DELATALIS, Wlk., from Australia being a distinct species.

4161. *a.* CRAMBUS BRACHYRHABDA, Hmps., P. L. S. 1906, p. 494, pl. 36, f. 18.

♂. Head, thorax and abdomen black-brown. Forewing fuscous brown with a cupreous tinge; a white fascia on median nervure emitting very short streaks on veins 2-3-4; cilia brown at base, brownish grey at tips. Hindwing fuscous brown; cilia brown at base, brownish grey at tips.

Habitat.—SIKIM. *Exp.* 16 mill.

4177. *a.* CRAMBUS DIANIPHALIS, n. sp. (Plate E., f. 10).

Forewing with vein 11 curved and approximated to 12; both wings with veins 4·5 stalked.

♂. Head and thorax white; palpi at sides and patagia tinged with brown; abdomen white dorsally tinged with brown. Forewing white suffused and irrorated with pale red-brown, the costal area deep red-brown; a white fascia from base through the cell to postmedial line, thence diffused to termen below apex; an oblique irregular black-brown discoidal bar, dilated below; a very highly dentate postmedial line from costal area to inner margin, some of the teeth almost reaching termen; a fine brown terminal line. Hindwing greyish brown.

♀. Forewing with the white fascia narrower and not reaching beyond postmedial line, the discoidal bar obsolescent.

Habitat.—CEYLON, Maskeliya (Green). *Exp.* 28 mill. Type in B. M.

4185. *b.* PLATYTES ARGYROTRICHA, n. sp.

Forewing with vein 10 stalked with 8·9; 11 anastomosing with 12.

♂. Head, thorax and abdomen white tinged with rufous, the last with some fuscous irroration. Forewing white suffused with rufous except on costal and inner areas and sparsely irrorated with large black scales; the terminal half of costa with three oblique rufous striæ and two oblique lines from costa to vein 7 near termen, the apex white with a yellow patch; a fine terminal dark line from costa to vein 4 followed by a yellow patch extending to submedian fold with two black points on it; cilia silvery with a fine dark line near base. Hindwing white tinged with pale yellow-brown except at apex; cilia with two fine brown lines on apical half.

Habitat.—ASSAM, Khasis. *Exp.* 18 mill. Type in B. M.

4193. *a.* PLATYTES AGROPERALIS, n. sp. (Plate E., f. 11).

Head and thorax pale brown mixed with whitish; abdomen grey, dorsally tinged with fuscous. Forewing very narrow, the apex produced, the termen very oblique; pale red-brown mixed with white; a white fascia on median nervure; an interrupted black streak in submedian fold from before middle to termen and another in discal fold from middle of cell to beyond the cell; an oblique, minutely dentate postmedial line, the area beyond it mostly white; a terminal series of black points. Hindwing pale fuscous brown.

Habitat.—CEYLON, Maskeliya (Green). *Exp.* 14 mill. Type in B. M.

SCHENOBIANÆ.

4255. *b.* PATISSA INTERSTICALIS, n. sp. (Plate E., f. 30).

♂. White; palpi blackish at sides; mid and hind legs tinged with fuscous. Forewing with broad brown streaks in all the interspaces. Hindwing pure white.

Habitat.—CEYLON, Kosland, 1,000' (Mackwood). *Exp.* 24 mill. Type in B. M.

ANERASTIANÆ.

4290. *a.* ANERASTIA STICTELLA, n. sp.

Palpi of male hollowed out to receive the brush-like maxillary palpi, antennæ with sinus at base of shaft containing a ridge of scales.

Head and thorax pale brownish with a very slight pimply tinge; abdomen dorsally ochreous, ventrally whitish. Forewing pale; the costal area whitish suffused by reddish brown below, the inner area slightly suffused with purplish red; a medial black spot on vein 1; a spot below lower angle of cell; post-medial spots on veins 3·2 and 1; some dark points on termen. Hindwing ochreous white, the termen slightly tinged with brown.

Habitat.—PUNJAB, Kangra Valley, 4,500' (Dudgeon). *Exp.* 22 mill. Type in B. M.

4366. *a.* CRITONIA HOLORHODA, n. sp.

♀. Head and thorax rose-pink; hind legs and abdomen ochreous. Forewing rose-pink, the veins with slightly darker streaks defined by faint pale streaks above. Hindwing white tinged with ochreous.

Habitat.—CEYLON, Pundaloya (Green). *Exp.* 30 mill. Type in B. M.

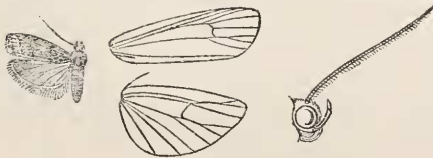
PHYCITINÆ.

Genus NONIA.

Type.

Nonia.—Rag. Rom. Mem. viii., p. 260 (1901). *exiguella*.

Proboscis present; palpi upturned, slender, reaching about vertex of head; frons smooth; antennæ of male ciliated; tibiæ moderately fringed with hair. Forewing narrow, the apex rounded; vein 2 from towards angle of cell; 3·5 stalked, 4 absent; 6 from below upper angle; 9 absent; 10·11 from cell. Hindwing with vein 2 from near angle of cell; 3·5 stalked, 4 absent; 6·7 from upper angle, 8 anastomosing with 7 to near apex.



Nonia taprobalis ♂ $\frac{3}{2}$.

4316*a.* NONIA TAPROBALIS, n. sp.

♂. Head and thorax dark-brown slightly tinged with grey; pectus, legs and abdomen grey tinged with brown. Forewing dark-brown mixed with some grey; the 1st line almost medial, grey slightly

defined by fuscous on outer side, very oblique from costa to submedian fold, then inwardly oblique; a faint discoidal point; the 2nd line subterminal, whitish, almost straight, erect; a fine pale line at base of cilia. Hindwing whitish tinged with brown; a fine dark terminal line; cilia white with a brown line through them.

Habitat.—CEYLON (Alston). *Exp.* 12 mill. Type in B. M.

Genus TINESTRA, nov.

Palpi upturned and reaching well above vertex of head; maxillary palpi filiform; antennæ of female ciliated. Forewing with veins 3 and 5 from angle of cell, 4 absent; 6 from below upper angle; 9 absent; 10·11 from cell. Hindwing with vein 2 from angle of cell, 5 from above angle, 3·4 absent; 6·7 from upper angle; 8 confluent with 7 to apex.

4316. *a.* TINESTRA MICRALIS, n. sp.

♀. Grey tinged with brown; palpi with the 2nd and 3rd joints banded with blackish. Forewing with the basal area somewhat browner, the rest of wing

irrorated with black ; the 1st line double filled in with yellowish, almost medial, oblique and slightly bent inwards to costa ; two prominent black discoidal points ; postmedial line double filled in with yellowish, almost obsolete and bent inwards to costa, then erect ; subterminal line punctiform, black, slightly incurved below costa, then excurved to submedian fold ; a terminal series of black points. Hindwing grey tinged with brown.

Habitat.—CEYLON, Rambukkhana (Alston). *Exp.* 10-12 mill. Type in B. M.
Genus. CROCIDOPORA.

Type.

Crocidopora, Meyr., P. Linn., Soc. N. S. W., vii, p. 158 (1882), ... *cinigerella*.

Palpi porrect, the 2nd joint extending about twice the length of head and thickly scaled, the 3rd moderate ; maxillary palpi of female dilated with scales ; frons rounded ; antennæ of female ciliated. Forewing with vein 2 from near angle of cell ; 3·5 from angle, 4 absent ; 6 from upper angle ; 8·9 stalked ; 10·11 from cell. Hindwing with vein 2 from angle of cell ; 3·5 stalked. 4 absent ; 6·7 from upper angle, 7 anastomosing with 8 to near apex.



Crocidopora phaealis ♀.

4325. a. CROCIDOPORA
PHÆALIS, n. sp.

♀. Head, thorax and abdomen black-brown slightly mixed with grey ; tarsi tinged with white. Forewing fuscous tinged with purplish and slightly irrorated with

grey ; antemedial line represented by a diffused oblique whitish striga from costa to median nervure ; a whitish patch on middle of costa ; traces of a black discoidal lunule ; postmedial line very ill-defined, whitish, excurved at middle ; subterminal line represented by some diffused whitish scales. Hindwing fuscous ; cilia grey with a fine whitish line at base.

Habitat.—CEYLON, Maskeliya (J. Pole). *Exp.* 26 mill. Type in B. M.

4325. a. HOMESOMA GLAUCOCHROA, n. sp.

♀. Head, thorax and abdomen grey tinged with brown ; palpi blackish except at base. Forewing grey irrorated and in parts suffused with red-brown : the 1st line almost medial, grey, excurved from costa to below cell, then slightly angled inwards in submedian fold, a brown patch before it on inner area defined by fuscous on inner side ; the 2nd line grey slightly defined on each side by brown, excurved at middle ; a terminal series of rather elongate black points. Hindwing semi-hyaline whitish, the terminal area tinged with brown ; cilia white with a slight brown line near base.

Forewing with veins 4·5 from cell ; hindwing with the cell very short, the discocellulars oblique, veins 3 and 5 strongly stalked, 2 from angle. This species will probably require a new genus when the male is discovered.

Habitat.—CEYLON, Matale (Pole). *Exp.* 12 mill. Type in B. M.

Genus. MESCINIADIA.

Type.

Mesciniadia, Hmps., Rom. Mem., viii, p. 121 (1901) *infractalis*.

Proboscis clothed with scales towards base; palpi erect, the 3rd joint as long as the 2nd extending to well above vertex of head and with a triangular tuft of black scales in front; maxillary palpi filiform; frons smooth; antennæ of male with tufts of scales at the joints. Forewing long and narrow; veins 2 and 3 strongly stalked from angle of cell, sometimes from a point in female; 4·5 strongly stalked (in the Ceylon specimen coincident) from angle of cell; 6 from upper angle; 8·9·10 stalked; 11 from cell. Hindwing with the costa strongly arched near base and with tuft of long hair on upper side below costa; cell long; vein 2 from angle; 3 and 5 strongly stalked, 4 absent; 6·7 stalked; 8 anastomosing with 7 to near apex.

4325. *b.* MESCINIADIA INFRACTALIS, Wlk. xxx, 958 (1864); Hmps., Rom. Mem. viii, p. 121, pl. 48, f. 7.

Head, thorax and abdomen pale brownish ochreous; palpi black at tips. Forewing pale brownish ochreous irrorated with brown, the terminal area suffused with fuscous except at costa; the 1st line indistinct, blackish, oblique below the cell, with a rufous tinge before it on inner area and slight blackish mark beyond it in and below cell; a slight blackish discoidal point; a post-medial blackish point on costa. Hindwing semi-hyaline whitish, the veins and termen tinged with brown.

Habitat.—CEYLON, Maskeliya (Alston); BORNEO, Sarawak. *Exp.* 12 mill.

4332. *b.* HETEROGRAPHIS FALSALIS, n. sp.

♀. Head, thorax and abdomen brownish ochreous mixed with grey; tarsi fuscous tinged with white. Forewing grey tinged with ochreous and irrorated with fuscous; a diffused patch of black scales on inner area before the 1st line which is almost medial, blackish defined by pale grey on inner side, excurved from costa to submedian fold, angled inwards on vein 1 and oblique to inner margin; two prominent black discoidal points, the lower rather elongate; the 2nd line subterminal, pale grey slightly defined on each side by fuscous and blackish points, slightly angled inwards at vein 1; a terminal series of black points. Hindwing white; a fine brown terminal line; cilia with a fine brown line near base from apex to vein 2.

Habitat.—MADRAS, Gooty (Campbell). *Exp.* 20 mill. Type in B. M.

4341. *d.* EUZOPHERODES ALBISTRIGELLA, n. sp. (Plate E., f. 13.)

Forewing with veins 3·5 from cell; 10 from cell.

Head and thorax greyish fuscous; abdomen grey tinged with fuscous. Forewing fuscous brown with grey-white streaks in the interspaces to the subterminal grey line which is oblique and angled inwards in submedian fold; termen with some grey irroration and a series of black points. Hindwing pale semi-hyaline tinged with fuscous, especially towards termen.

Habitat.—CEYLON, Maskeliya (Pole). *Exp.* 30 mill. Type in B. M.

4341. *e.* EUZOPHERODES PROLEUCALIS, n. sp.

Forewing with veins 3·5 from cell, 10 from cell.

♀. Head, thorax and abdomen dull brown mixed with grey. Forewing dull reddish brown irrorated with white; the costal area white to near apex; antemedial line white oblique from costal area to submedian fold, then incurved; an ill-defined white streak in end of cell, and a discoidal bar; a diffused oblique white bar beyond the cell between discal and submedian folds; postmedial line white, angled outwards at discal fold, oblique to submedian fold, then bent outwards. Hind wing pale brown.

Habitat.—PUNJAB, Kangra Valley, 4500' (Dudgeon). *Exp.* 18 mill. Type in B. M.

4341. *f.* EUZOPHERODES HEMIPHEA, n. sp.

♀. Head and thorax red brown with a cupreous gloss; pectus, legs and abdomen grey. Forewing with the basal half red-brown, the terminal half grey tinged with red-brown; the 1st line just beyond the dark area, oblique from costa to discal fold, then incurved; a yellowish discoidal mark; the 2nd line subterminal, whitish defined by fuscous brown on inner side and with the area beyond it rather more suffused with brown, slightly excurved at middle. Hindwing whitish tinged with brown.

Habitat.—CEYLON, Matale (Pole). *Exp.* 12 mill. Type in B. M.

4342. *a.* EUZOPHERA ECTOPHOEA, n. sp. (Plate E., f. 19.)

♂. Head, thorax and abdomen brownish ochreous; palpi fuscous. Forewing brownish ochreous, with slight brown irroration; the costal area whitish to subterminal line leaving the costal edge brown; antemedial line oblique, ending on middle of inner margin; a fuscous discoidal bar; subterminal line whitish, defined on inner side by fuscous suffusion from below costa extending on inner margin to antemedial line, on outer side by a strong black line, bent outwards to apex and with some fuscous suffusion beyond it towards inner margin; a terminal series of black points. Hindwing whitish tinged with brown, especially towards termen; cilia whitish with a fuscous line through them.

Habitat.—CEYLON (de Mowbray). *Exp.* 18 mill. Type in B. M.

4343. *d.* EUZOPHERA COCCIPHAGA, n. sp. (Plate E., f. 12.)

♂. Head, thorax and abdomen greyish brown; palpi blackish; tarsi with slight pale rings. Forewing grey brown with slight dark irroration; a double, somewhat diffused and slightly curved medial black line with some dark suffusion beyond it on costa; a black discoidal bar; subterminal line double filled in with grey, oblique, slightly excurved at middle, the area beyond it suffused with fuscous; a punctiform black terminal line and slight pale line at base of cilia. Hindwing greyish suffused with fuscous, the termen darker; a pale line at base of cilia.

Habitat.—SIKIM, *Exp.* 24 mill. Type in B. M.

The larva lives under a coccid on which it feeds.

Genus. NEASARTA, nov.

Type—*N. nyctichroalis*.

Proboscis well developed; palpi porrect, extending about three times length of head, triangularly scaled, the 3rd joint hidden in hair; maxillary palpi

dilated with scales: frons smooth: antennæ of female ciliated; tibiæ smoothly scaled. Forewing narrow; veins 3 and 5 from angle of cell, 4 absent; 6 from upper angle; 8·9 stalked; 10 from cell, approximated to 8·9; 11 from cell. Hindwing with vein 2 from long before angle of cell; 3 and 5 from angle, 4 absent; 6·7 from upper angle; 8 anastomosing with 7 to near apex.

4346. *b.* NEASARTA NYCTICHOALIS, n. sp.

♀. Black-brown; tarsi ringed with white. Forewing irrorated with greyish and faintly tinged with purple; a faint diffused obliquely curved antemedial greyish band; a pale point on costa towards apex; cilia with a fine pale line at base followed by a dark line. Hindwing with a faint purplish tinge; cilia with a



Neasarta nyctichroalis. ♀ $\frac{3}{2}$

fine pale line at base followed by a dark line.

Habitat.—CEYLON, Maskelyia (J. Pole). *Exp.* 18 mill. Type in B.M.

4355. *a.* NEPHOPTERYX HEMIARGYRALIS, n. sp.

♂. Head ochreous tinged with rufous; palpi brown, rufous at tips; antennæ blackish; tegulæ rufous; thorax brown suffused with leaden grey; pectus and legs ochreous white, the tarsi brown slightly ringed with white; abdomen reddish brown. Forewing red-brown, the costal area broadly silvery white slightly irrorated with brown, the costal edge tinged with rufous and with dark brown streak on medial area, the white extending to vein 1 beyond antemedial line and on terminal area to vein 2; antemedial line double, black filled in with white, obsolete on costal area and below vein 1, oblique from subcostal nervure to below cell when there is a small black spot on its outer edge, then bent inwards; two large black discoidal points; postmedial line white defined on each side by brown, oblique from costa to discal fold where it is angled inwards, angled outwards at vein 5, then oblique and very minutely dentate; a terminal series of small black spots; cilia pale brown with a fine whitish line near base. Hindwing whitish uniformly suffused with brown; a fine dark terminal line; cilia pale brown with a fine whitish line at base followed by a slight brown line.

Habitat.—ASSAM, Khasis. *Exp.* 24 mill. Type in B.M.

4363. *a.* NEPHOPTERYX (*Salebria*) ATRIBASALIS, n. sp.

Head and thorax white irrorated with black; the tufted maxillary palpi fulvous at tips; tibiæ and tarsi banded with black; abdomen whitish irrorated and suffused with fuscous, the anal tuft tinged with ochreous. Forewing white irrorated with black and tinged with grey except the costal area to postmedial line; the basal area below the cell suffused with fuscous; antemedial line white, oblique, defined by black on outer side from costa to median nervure, then by black on inner side; the discoidal points in the form of short black streaks at upper and lower angle of cell; postmedial line white strongly defined on each side by black towards costa, then slightly defined, oblique, sinuous, excurved

middle ; a black terminal line ; cilia with fine black line near base and slight line near tips. Hindwing white tinged with brown ; a brown terminal line.

Habitat.—BELOOCHISTAN, Quetta (Nurse). *Exp.* 16 mill. Type in B. M.

4383. *a.* MYELOIS ALBICOSTALIS, n. sp.

♀. Head and thorax whitish tinged with brown ; palpi with the 3rd joint long and banded with black ; abdomen white, dorsally slightly tinged with brown. Forewing whitish suffused with pale ochreous brown and with white fascia on costa ; antemedial line very indistinct, white, bent inwards to costa ; a crimson patch on middle of inner margin ; subterminal line white, excurved and very minutely waved at middle, with a small crimson spot before it on inner margin ; a terminal series of slight black points. Hindwing white faintly tinged with brown ; a slight brown terminal line ; cilia white.

Habitat.—CEYLON, Matale (Pole). *Exp.* 14 mill.

4387. *b.* PHYCITA DEODARALIS, n. sp.

Head and thorax white mixed with fuscous-brown scales ; tarsi banded fuscous and white ; abdomen grey-white irrorated with fuscous and with slight fuscous dorsal line. Forewing white faintly tinged with olive and irrorated with brown ; diffused oblique subbasal and antemedial fuscous brown bands from subcostal nervure to inner margin ; the 1st line almost medial, diffused, fuscous strongly defined by white on inner side, oblique from costa to submedian fold, then slightly incurved ; two large discoidal fuscous points with a faint incurved diffused line from the lower to inner margin ; subterminal line strong, white defined by fuscous on inner side, excurved at middle and slightly angled inwards in discal and submedian folds ; a terminal series of blackish points ; cilia whitish mixed with pale brown. Hindwing whitish tinged with brown, the cilia white.

Habitat.—KASHMIR, Dras (Leech). *Exp.* 22-26 mill. Type in B.M.

4389. PHYCITA CYCLOGRAMMA. Maxillary palpi of male brush-like in a hollow of the labial palpi ; antennæ with sinus and double tuft at base and uniseriate branches. Allied to *P. pectenella*.

4389. *b.* PHYCITA ENDOMELÆNA, n. sp. (Plate E, f. 33).

Head and thorax grey mixed with a few fuscous scales, the tegulæ faintly tinged with purplish red ; palpi black except at tips ; legs tinged with brown, the tarsi fuscous ringed with grey ; abdomen grey tinged with brown. Forewing grey irrorated with red-brown especially on costal area ; the basal half of inner margin blackish expanding into a large patch before the 1st line which is medial, grey defined on each side by red-brown suffusion, oblique, very slightly sinuous ; the discoidal points represented by two minute black streaks and two minute streaks beyond lower angle of cell ; subterminal line grey, defined on each side by red-brown, excurved below costa, then slightly oblique ; a terminal series of prominent black points ; cilia with a fine whitish line at base. Hindwing semi-hyaline grey white ; a fine dark terminal line ; cilia whitish with dark line through them.

Habitat.—CEYLON, Maskeliya (Pole, Alston). *Exp.* 26 mill. Type in B.M.
4390. *a.* PHYCITA EUZONALIS, n. sp.

♀. Head and thorax brown mixed with grey; vertex of head whitish; palpi whitish banded with brown; legs banded with fuscous, the tarsi with slight pale rings; abdomen grey-brown with slight white segmental lines. Forewing with the base brown slightly irrorated with white; a broad antemedial band ochreous on inner side, white on outer and at costa, defined on each side by lines of raised metallic blackish scales; medial area suffused with dark-brown; a diffused white patch from costa to lower angle of cell with the two brown discoidal points on it; terminal area whitish suffused and irrorated with yellow-brown; subterminal line white defined on each side by dark brown, slightly incurved below vein 6; a series of slight black points just before termen; a fine yellow-brown terminal line. Hindwing semihyaline white, the veins and apex tinged with brown; a fine brown terminal line and brown line near base of cilia.

♂. Head, thorax and base of abdomen more rufous, the terminal part of abdomen and anal tuft blackish; hind tibiæ strongly dilated and with large black patch; forewing with the basal area tinged with rufous, the terminal half more uniform brown.

Habitat.—CEYLON, Maskeliya (Pole), Madulsima (Vaughan). *Exp.* 26-28 mill.
4394. *a.* PHYCITA DEFINALIS, n. sp. (Plate E., f. 21).

♀. Head, thorax and abdomen yellow-brown mixed with whitish; palpi black at tips; fore legs fuscous; hind legs white with blackish marks on tibiæ at middle, on inner side at extremity and on spurs, the tarsi blackish ringed with white. Forewing yellow-brown with dark irroration, the costal area white irrorated with black; antemedial line black defined by white on inner side, very oblique from costa to median nervure, then erect; two prominent black discoidal points; subterminal line black defined by white on outer side, oblique, somewhat incurved and very slightly angled outwards at middle; a punctiform black terminal line. Hindwing whitish tinged with brown and with fine dark terminal line; cilia brownish white with fine pale line at base.

Habitat.—CEYLON, Puttalam (Pole). *Exp.* 14 mill. Type in B.M.

4410. *c.* RHODOPLÆA ALBIRENALIS, n. sp. (Plate E., f. 22).

♀. Head and thorax yellow-brown tinged with whitish; palpi with black marks on sides of joints and the extremity of 3rd joint black; femora and tibiæ whitish irrorated with fuscous, the hind tibia with black patch on inner side at extremity and the spurs black; abdomen yellow-brown. Forewing ochreous brown with some dark irroration, the costal area whitish; antemedial line blackish defined by white on inner side, angled outwards on subcostal and median nervures and inwards in cell, incurved below the cell; a white discoidal lunule with slight dark points above and on outer side and a slight streak above it on costa; subterminal line white defined on each side by blackish, the black on outer side bent outwards to apex, angled outwards below costa, then sinuous; a terminal series of black points; a pale line at base of cilia. Hindwing pale brown, the termen slightly darker; cilia whitish with a dark line through them.

Habitat.—CEYLON, Uva (Alston). *Exp.* 22 mill. Type in B.M.

4421. *a.* SPATULIPALPIA HEMAPHORALIS, n. sp. (Plate E, f. 20.)

Palpi of male long, the 2nd joint with fringe of long hair behind, the 3rd moderate and nearly smooth; maxillary palpi thickly tufted with scales; antennæ with the basal joint long, the shaft laminate and recurved towards base.

♂. Head and thorax pale rufous; palpi blackish above; pectus and legs whitish, the latter slightly irrorated with rufous, tarsi fuscous with pale rings; abdomen ochreous slightly tinged with fuscous on dorsum. Forewing pale fuscous with a purplish tinge; a white streak from base below costa, then curved downwards to lower angle of cell to join a white streak on median nervure, the cell below the curved streak and a slight streak below median nervure blood-red; a wedge-shaped black spot defined by white just beyond the cell with a black spot above it below costa; the terminal half of costal area white slightly irrorated with brown and with fine black streaks on the veins below costa; an oblique subterminal series of white points; some blackish points on termen; a fine white line at base of cilia. Hindwing semihyaline fuscous, the veins darker.

Habitat.—CEYLON, Uva, 3000' (Alston). *Exp.* 18 mill. Type in B.M.

4429. *a.* THIALLELA ENDOCHRALIS, n. sp.

♂. Head, thorax and abdomen ochreous yellow. Forewing red-brown mixed with greyish; a deep crimson fascia on costa from before middle to near apex, another on median nervure from before middle to beyond the cell where it expands; an ochreous yellow medial patch from cell to inner margin, constricted at middle with some crimson on its inner edge and a crimson patch beyond it on inner margin; a small whitish discoidal spot; subterminal line slight, ochreous, somewhat excurved and minutely waved at middle, expanding into a spot on inner margin. Hindwing yellowish suffused with brown; cilia of both wings brown with a yellow line at base.

Habitat.—CEYLON, Matale (Pole). *Exp.* 16 mill. Type in B.M.

4433. *c.* EPISCHNIA IRRARALIS, n. sp.

♀. Head and thorax white irrorated with some brown and fuscous scales; abdomen white irrorated with fuscous and dorsally tinged with brown. Forewing white irrorated with fuscous and largely suffused with brown except on costal area; a white streak above median nervure and vein 5; antemedial line represented by short obliquely placed blackish streaks on costa, subcostal and median nervures and a streak nearer base on vein 1; an elongate blackish point at lower angle of cell; a very indistinct diffused brown oblique line from costa before apex to beyond lower angle of cell with another indistinct diffused oblique line between veins 5 and 2; a faint diffused minutely waved fuscous line just before termen; a slight brown terminal line; cilia with brownish lines at middle and near tips. Hindwing whitish tinged with ochreous brown; a slight dark terminal line; cilia white with a pale brown line near base.

Habitat.—KASHMIR, Dras (Leech). *Exp.* 26 mill. Type in B.M.

EPIPASCHIANÆ.

4445. *MACALLA VALIDALIS*, insert *Orthuga basalis*, Swinh. A. M. N. H. (7) xvii, p. 556 (1906), nec Leech.

ENDOTRICHINÆ.

4508. *a. HENDECASIS MINUTALIS*, Hmpsh., A. M. N. H. (7), xvii, p. 214 (1906).

♂. Palpi extending about the length of head, the 3rd joint minute; forewing with veins 7 and 10 stalked, 8-9 absent.

White; palpi slightly tinged with rufous at sides; wing slightly tinged with rufous. Forewing with black point below base of cell; an oblique, fuscous, almost medial line from cell to inner margin and traces of a fine brown line from costa beyond middle to inner margin near tornus. Hindwing with oblique brown antemedial line and faint sinuous line from costa beyond middle to tornus.

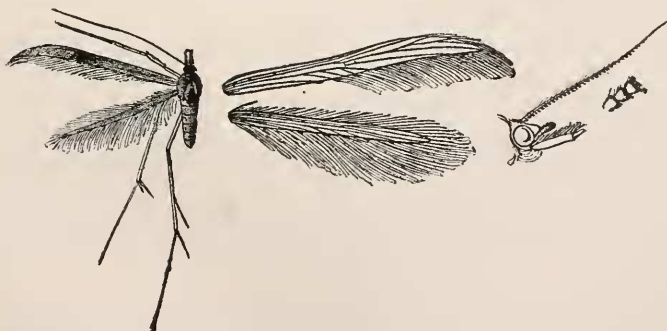
Habitat.—CEYLON, Hambantota. *Exp.* 12 mill.

Genus. OXYCHIROTA.

Type.

Oxychirota, Meyr. Trans. Ent. Soc., 1885, p. 438 *paradoxa*

Proboscis well developed; palpi porrect, the 2nd joint extending about $1\frac{1}{2}$ times length of head in the Australian species, about twice in the Ceylon species, and fringed with long scales above, the 3rd small, acuminate; maxillary palpi about half length of labial and dilated with scales; frons with conical prominence; antennæ nearly as long as forewing and annulated with scales at the joints; head globular; leg very long; tibiæ with the outer spurs half length of inner, the outer medial spur of hind tibia minute. Forewing linear lanceolate, the costa curved towards apex and fringed with hair; the inner margin and termen nearly in a straight line and fringed with very long cilia from middle of inner margin to apex, the inner margin with slight scale teeth; veins 2, 3, 4, very short; 5 from near 4; 6 from middle of discocellulars; 7, 8, 9, 10 stalked; 10 from beyond 7; 11 from near angle of cell; 12 free. Hindwing linear fringed with long cilia on costa and inner margin which has small scale teeth; veins 2, 3, 4 short and very indistinct; 5 from a point with 4; discocellulars visible; 7 from 6 anastomosing with 8 to middle of wing.



Oxychirota ceylonica. ♂

4508. *b.* OXYCHIROTA CEYLONICA, n. sp.

♂. Head, thorax and abdomen rufous mixed with some whitish. Forewing rufous overlaying pale scaling and with slight dark irroration; the scale teeth on inner margin black; black points at middle and end of cell. Hindwing rufous overlaying pale scaling and with slight dark irroration, the scale teeth on inner margin black.

Habitat.—CEYLON, Peradeniya (Thwaites). *Exp.* 14 mill. Type in B. M.

PYRALINÆ.

4522. *a.* PYRALIS CENALIS, Hmps. A. M. N. H. (7), xvii, p. 254 (1906).

♂. Head and thorax purplish grey mixed with reddish brown; legs whitish, the fore tarsi black with whitish rings; abdomen purplish grey with obscure dark dorsal bands. Forewing purplish grey irrorated with dark reddish brown; a dark patch at base of costa; antemedial line dark brown, expanding into a patch at costa, excurved at median nervure and above inner margin; some brown points on medial part of costa; a dark discoidal spot; postmedial line expanding into a patch on costa and defined by whitish on outer side, angled inwards below costa, excurved and minutely dentate, between veins 5 and 2; a terminal series of dark points. Hindwing yellowish white, with some slight dark points on termen.

Habitat.—CEYLON. *Exp.* 12 mill.

4542. *a.* STEMMATOPHORA OLIVALIS, Hmps. A. M. N. H. (7), xvii, p. 261 (1906).

♂. Head, thorax and abdomen olive-yellow, the last irrorated with a few dark scales. Forewing olive-yellow with slight dark irroration; traces of a sinuous antemedial line; a black discoidal point; some black specks on medial part of costa; the postmedial line placed towards termen, slight, dark, somewhat excurved at middle and narrowly defined by olive on outer side; the terminal area purple-red irrorated with black; cilia with fine pale line at base followed by a black line. Hindwing purple-red irrorated with black; a curved sub basal black line defined by whitish on inner side; the medial line defined by whitish on outer side, oblique from costa to submedian fold, then sinuous; cilia with fine pale line at base followed by a black line.

Habitat.—CEYLON, Haldamulla. *Exp.* 20 mill.

4546. *b.* STEMMATOPHORA SCOTALIS, Hmps., A. M. N. H. (7), xvii, p. 262 (1906).

♂. Head, thorax and abdomen fuscous black mixed with some grey; tarsi tinged with white. Forewing grey, almost wholly suffused and thickly irrorated with black; the medial area darker with some pale points on costa; antemedial line pale, defined by black on outer side, bisinuate; a black discoidal spot; postmedial line pale, defined by black on inner side, slightly angled inwards below costa and at submedian fold; a terminal series of black points. Hindwing fuscous with a fine pale line at base of cilia.

The specimen from Kashmir is browner and less black, the lines of forewing closer together, and the antemedial line more sinuous.

Habitat.—KASHMIR, Goorais Valley; PUNJAB, Kangra Valley, 4,500'. *Exp.* 22—24 mill.

4546. *c.* STEMMATOPHORA FULIGINALIS, Hmps., A. M. N. H. (7), xvii, p. 263 (1906).

♀. Sooty black; head dull rufous; palpi ochreous white; fore coxæ with some pale scales at extremity; mid tarsi and hind tarsi except basal joint ochreous white; abdomen with slight pale segmental rings. Forewing with the antemedial line represented by a whitish point in submedian fold, with traces of a pale line from it to inner margin; the postmedial line whitish, excurved and almost obsolete between veins 7 and 2, and with a more prominent small spot in submedian fold. Hindwing with the base of costal area greyish; an obliquely curved whitish antemedial line, waved and stronger on inner area; postmedial line whitish, curved, obsolescent on costal half, strong and waved on inner half, bent inwards to inner margin.

Habitat.—BENGAL, Calcutta. *Exp.* 30 mill.

4558. *a.* HERCULIA FLAMMEALIS, Hmps., A. M. N. H. (7), xvii, p. 263 (1906).

♀. Fiery red; tarsi whitish. Forewing slightly irrorated with deeper red; a straight, erect, whitish antemedial line defined by deep red on outer side; some white points on medial part of costa and a faint deep red discoidal spot; postmedial line whitish, defined by deep red on inner side, slightly excurved at middle; a fine pale line at base of cilia. Hindwing rather paler; an obliquely curved whitish postmedial line; a fine pale line at base of cilia.

Habitat.—MADRAS, Bellary, Ramandrug, 3,000'. *Exp.* 24 mill.

4575. *a.* TRIPHASSA MACRARTHRALIS, n. sp. (Plate E., f. 32).

Antennæ of male with the basal joint elongate and dilated, the base of shaft curved.

Head and thorax reddish brown mixed with grey; legs fuscous; abdomen grey-brown irrorated with black and with dorsal black band at base. Forewing grey irrorated with brown and fuscous, the basal area suffused with rufous to the whitish antemedial line which is excurved from costa to median nervure; the medial area with some pale points on costa; an indistinct dark discoidal spot; postmedial line whitish, excurved from costa to vein 4, incurved to submedian fold, then again excurved, some red-brown suffusion before it at middle and beyond it from costa to submedian fold; a terminal series of small black spots; cilia with white line at base followed by a dark line and grey and fuscous tips. Hindwing greyish suffused with red-brown and with slight dark irroration; an indistinct pale curved postmedial line; cilia whitish with dark line near base and dark tips.

Habitat.—CEYLON, Eppawela (Green.) *Exp.* 20 mill. Type in B.M.

4579. *b.* HYBOLOMA PALLIDALIS, Hmps., A. M. N. H. (7), xvii, p. 265 (1906).

♀. Head and thorax pale rufous; abdomen grey tinged with pale, rufous at base and irrorated with black. Forewing pale rufous slightly irrorated with

black, the terminal area somewhat deeper rufous; a small rather diffused black discoidal spot, and two obliquely placed postmedial points below costa. Hindwing pale ochreous, the terminal area tinged with rufous.

Habitat.—BURMA, Karen Hills, Thandsung. *Exp.* 22 mill.

Genus. LOPHOPALPIA.

Type.

Lophopalpia, Hmps. Trans. Ent. Soc., 1896, p. 526 *pauperalis*.

Palpi porrect, extending about the length of head, the 2nd joint fringed with long hair below extending to end of 3rd joint, which is bent sharply down at an angle; maxillary palpi filiform; proboscis minute; frons with a sharp tuft; antennæ of male ciliated; tibiæ fringed with hair on outer side; claspers and anal tuft large. Forewing with the



Lophopalpia pauperalis. ♂ $\frac{3}{2}$

costa arched at base, then nearly straight; male with a glandular swelling at base of costa below, fringed with long hair; vein 3 from near angle of cell; 4·5 from angle; 6 from upper angle; 7·8·9·10

stalked; 11 from cell. Hindwing with vein 3 from near angle of cell; 4·5 from angle; 6·7 shortly stalked; 7 anastomosing with 8.

4579. *f.* LOPHOPALPIA PAUPERALIS, Leech. Entom. xxii, p. 70, pl. iv, f. 11 (1889).

Head and tegulæ red-brown; patagia and thorax dark brown with a leaden gloss; abdomen ochreous grey, dorsally suffused with dark-brown. Forewing glossy rufous with some dark irroration and striation, the area below the cell and vein 4 greyer; traces of an erect antemedial line; postmedial line rather diffused, incurved from costa to submedian fold, then excurved, the rufous on its outer side running down to a point at submedian fold; a deep rufous terminal line; cilia rufous, greyish towards tornus. Hindwing pale silky ochreous with some dark irroration and striation between the cell and the vein 4 and submedian fold; a fine deep rufous terminal line; cilia with slight brown line near base; the underside pale ochreous, the costa tinged with rufous, a faint curved postmedial line.

Habitat.—JAPAN; ASSAM, Khasis; PULO LAUT. *Exp.* 26 mill.

4595. *b.* PARACTENIA DESERTALIS, n. sp. (Plate E, f. 31.)

Antennæ of male ciliated; forewing with vein 7 from beyond 9.

♂ Head, thorax and forewing pale ochreous; abdomen and hindwing ochreous white; fore tibiæ at extremity and tarsi tinged with fuscous; pectus: coxæ and base of abdomen below tinged with pale pink.

♀. Forewing with slight fuscous discoidal spot, the medial part of costa with series of slight dark streaks; traces of a pale postmedial line oblique below vein 4.

Habitat.—BELOOCHISTAN, Quetta (Nurse). *Exp.* 14-20 mill. Type in B. M.

4601. *BOSTRA marginata*, insert *Arripana* INDICATOR, Wlk. Journ. Linn Soc. vii, p. 74 (1864), which has precedence.

THE MOTHS OF INDIA (HAMPSON).

DESCRIPTION OF PLATE E.

WHICH APPEARED IN NO. 1, VOL. XVIII, PAGE 44.

- | | |
|---|--|
| Fig. 1. <i>Epiplema polei</i> . | Fig. 24. <i>Pseudoterpna neonoma</i> . |
| „ 2. <i>Epiplema subfvarida</i> . | „ 25. <i>Entephria stictalis</i> . |
| „ 3. <i>Dirades nubila</i> . | „ 26. <i>Calamochrous purpuralis</i> . |
| „ 4. <i>Hypochrosis hypoleuca</i> . | „ 27. <i>Nacoleia tumidicostalis</i> . |
| „ 5. <i>Boarmia microra</i> . | „ 28. <i>Pionea scopicalis</i> . |
| „ 6. <i>Phibalapteryx rufipalpis</i> . | „ 29. <i>Abraxas latizonata</i> . |
| „ 7. <i>Sauris metaphæa</i> . | „ 30. <i>Patissa interstitialis</i> . |
| „ 8. <i>Eupithecia albifurra</i> . | „ 31. <i>Paractenta desertalis</i> . |
| „ 9. <i>Neoscelis metachlora</i> . | „ 32. <i>Triphassa macarathralis</i> . |
| „ 10. <i>Crambus dianiphalis</i> . | „ 33. <i>Phycita endomelana</i> . |
| „ 11. <i>Platytes acroperalis</i> . | „ 34. <i>Tegostoma trophotalis</i> . |
| „ 12. <i>Euzophera cocciphaga</i> . | „ 35. <i>Cybolomia cervicalis</i> . |
| „ 13. <i>Euzopherodes albistrigella</i> . | „ 36. <i>Nacoleia nigricostalis</i> . |
| „ 14. <i>Entephria hypostictalis</i> . | „ 37. <i>Calamochrous sarcalis</i> . |
| „ 15. <i>Oligostigma alicialis</i> . | „ 38. <i>Melissoblaptis vinotincta</i> . |
| „ 16. <i>Sufetula nitidalis</i> . | „ 39. <i>Acidalia phœnicæaria</i> . |
| „ 17. <i>Phlyctenodes leuconeuralis</i> . | „ 40. <i>Dysethia glaucofusa</i> . |
| „ 18. <i>Abraxas poliostrata</i> . | „ 41. <i>Euchloris albidentula</i> . |
| „ 19. <i>Euzophera ectophæa</i> . | „ 42. <i>Hyppephyra cyanosticta</i> . |
| „ 20. <i>Spatulipalpia hamophoralis</i> . | „ 43. <i>Cidaria scotaria</i> . |
| „ 21. <i>Phycita definalis</i> . | „ 44. <i>Filodes bilinealis</i> . |
| „ 22. <i>Rhodophaea albirenalis</i> . | „ 45. <i>Phryganodes chrysalis</i> . |
| „ 23. <i>Abraxas argyrosticta</i> . | „ 46. <i>Lygropia shevaroyalis</i> . |

(To be continued.)